



"The World's Finest, Safest Doors"™

WWW.MARTINDOOR.COM

SINCE 1936



Looks like wood, built like wood,



Front Cover: 201 / White Laminate Windows / Signal White

111 / V-Angle / 63 Windows / Dark Brown

made of steel. Now with Angles!



- Martin's steel garage door looks exactly like wood, without the upkeep or cost.
- Stiles and rails are bolted together, not glued, not overlaid, so they can not delaminate.
- True 3/4" panel depth.

The steel Pinnacle, now with angle stiles, provides the same beautiful look as aluminum and wood but costs up to 40% less.

PREMIUM STEEL CORNERSTONE

Pages 6 - 11

- Cornerstone: 4-Section 7' (2134) High
- 24 Gauge • Lifetime Warranty*



82 Steel-Framed Windows / Short Panel / White Mist



Flush Panel / Light Almond

MARTIN STANDARD Pages 12 - 15

- 4-Section 8' (2438) High • 26 Gauge
- 5 Year Warranty



Oxford Windows / Long Panel / White Mist

ATHENA ALL GLASS

Pages 16 - 21

- Aluminum Athena • Steel Athena
- Martin Premium Hardware
- Lifetime Warranty*



231 / White Laminate Windows / Traffic White



212 / White Laminate Windows / Desert Bronze

FRENCHPORTE Pages 20 - 21

- Aluminum or Steel • Martin Premium Hardware
- Lifetime Warranty*



Kendra / Smoked Windows / White Mist

PINNACLE CARRIAGE HOUSE

Pages 22 - 31

- Aluminum Pinnacle • Steel Pinnacle
- Martin Premium Hardware
- Lifetime Warranty*



ELITE CHALET & COPPER

Pages 32 - 37

- Composite Wood • Copper
- Martin Premium Hardware
- Lifetime Warranty*



To design your door online visit: design.martindoors.com



CORNERSTONE

GOLD
MEDAL
WINNER

Safety, quality and durability have always been Martin's first priority. This traditional door is no exception, a beautiful door built to last.

Flush Panel (No Rib) / Walnut Wood Grain Steel

34 Steel-Framed Frosted Windows / Long Panel / Gray White / With Antique Hardware



Ribbed Panel / Terra Brown



83 Steel-Framed Smoked Windows / Grooved Panel / Walnut Wood Grain Steel

CORNERSTONE



Flush Panel (No Rib) / Desert Taupe

83 Steel-Framed Smoked Windows / Short Panel / Walnut Wood Grain Steel





Full View Long Windows Upgrade / Flush Panel (No Rib) / Bright Stainless

Dawn Windows / Short Panel / Desert Taupe



CORNERSTONE



Flush Panel (No Rib) / Sandcast Bronze / With Antique Hardware

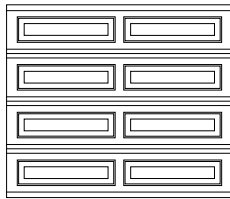


70 Steel-Framed Smoked Windows / Long Panel / Walnut Wood Grain Steel

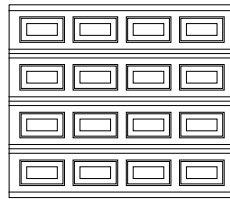
Legend: ∞ - Lifetime Warranty † 5 - 5 Year Warranty † 10 - 10 Year Warranty †

PANEL STYLES

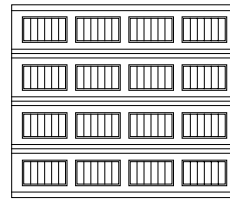
24 gauge steel. 4-section 7' [2134] high. Optional wide center style available. - ∞



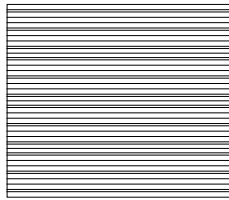
Long



Short



Grooved



Ribbed

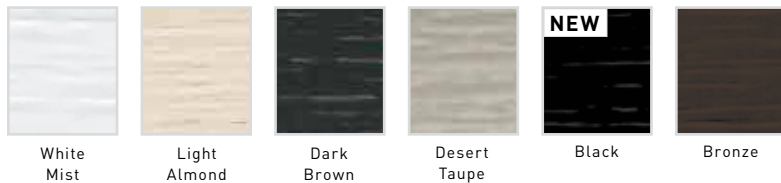


Flush † (No Rib)

COLORS

Long-lasting baked-on enamel paint.

STEEL PAINT COLORS † - 10



STEEL WOOD GRAIN † - 10



POWDER COAT COLORS †† - 5

[See full list of colors on pages 42 - 43]



^ Powder coated doors are insulated.

† See manufacturer's written warranty for details and limitations.

◇ Flush doors available in smooth when powder coated. Call factory for details.

INSULATION

Add insulation for thermal efficiency, noise reduction, durability, and minimal upkeep.

i2 R8 Steel + Insulation + Vinyl

i3 R8 Steel + Insulation + Steel

i4 R14 Steel + 2 Insulation Layers + Steel

HARDWARE

Includes roller, track and accessories for a strong and lasting door system.

(More information on page 46)

P Martin Premium Hardware Package - ∞

S Martin Standard Hardware Package - 5

WINDOWS

Available in acrylic or tempered glass and in Classic or Steel-Framed windows.

(See pages 38 - 39)

WINDOW TINT

Insulated glass options are available on most window types.

(See p. 38 for full tint options) Glass and acrylic have different tints.

GLASS / ACRYLIC



Clear



Frosted



Bronze
(Tinted)



Gray
(Tinted)



Smoked
(Tinted)

LAMINATE



Clear



White

EXTRA OPTIONS

(More information on page 44)

MAIL SLOTS

VENTS

INSIDE LOCK

T-HANDLE LOCK

VAULT RELEASE

ANTIQUE HARDWARE

SECTION JOINT



Tongue & Groove Joint
Industry standard tongue and groove joint.



Safety Joint
Martin safety joint helps protect fingers and hands from serious injury.



Flush Panel (No Rib) / White Mist



Virginian Short Windows / Short Panel / Desert Taupe



Ribbed Panel / Oxide Red

MARTIN STANDARD

Value priced doors with classic designs, durable and virtually maintenance free.



Short Panel / White Mist

68 Steel-Framed Smoked Windows / Grooved Panel / Desert Taupe





Grooved Panel / Light Almond

Canterbury Windows / Long Panel / Dark Brown



MARTIN STANDARD



Grooved Panel / Dark Brown

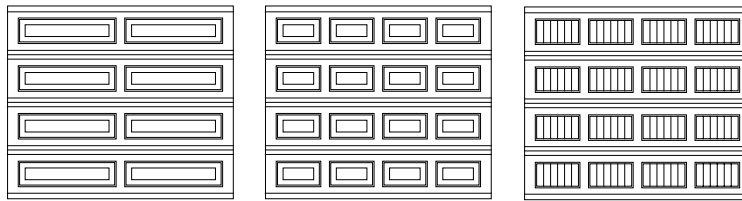


Long Panel / White Mist / Full Windows / With Antique Hardware

Legend: ∞ - Lifetime Warranty † 5 - 5 Year Warranty †

PANEL STYLES

26 gauge steel. 4-section 8' (2438) high. - 5



Long

Short

Grooved

(For any other Tongue & Groove joint panels, please see the commercial line)

COLORS

Long-lasting baked-on enamel paint.

STEEL PAINT COLORS - 5



White Mist

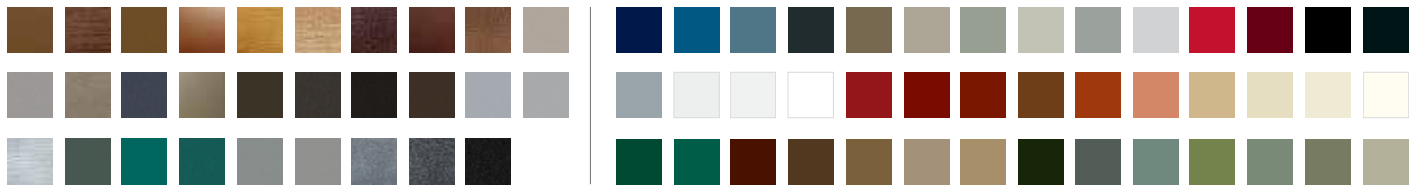
Light Almond

Dark Brown

Desert Taupe

POWDER COAT COLORS^{^†} - 5

(See full list of colors on pages 42 - 43)



INSULATION

Add insulation for thermal efficiency, noise reduction, durability, and minimal upkeep.

i2 R8 Steel + Insulation + Vinyl





i3 R8 Steel + Insulation + Steel

i4 R14 Steel + 2 Insulation Layers + Steel

[^] Powder coated doors are insulated.
[†] See manufacturer's written warranty for details and limitations.

HARDWARE

Includes roller, track and accessories for a strong and lasting door system.
 (More information on page 46)

-  **P** Martin Premium Hardware Package - 
-  **S** Martin Standard Hardware Package - 

WINDOWS

Available in acrylic or tempered glass and in Classic or Steel-Framed windows.
 (See pages 38-39)

WINDOW TINT

Insulated glass options are available on most window types.
 (See p. 38 for full tint options) Glass and acrylic have different tints.



EXTRA OPTIONS

(More information on page 44)

- MAIL SLOTS
- VENTS
- T-HANDLE LOCK
- INSIDE LOCK
- VAULT RELEASE
- ANTIQUE HARDWARE

SECTION JOINT



Tongue & Groove Joint
 Industry standard tongue and groove joint.



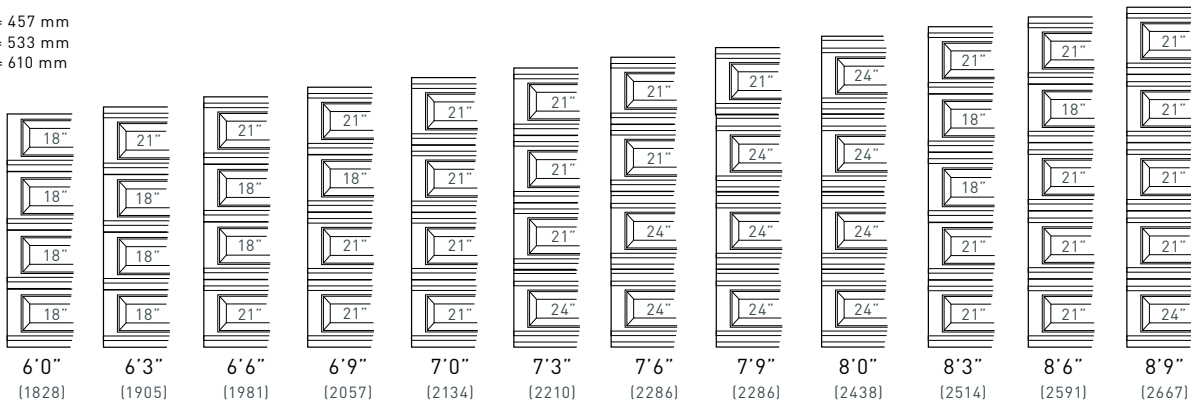
Safety Joint
 Martin safety joint helps protect fingers and hands from serious injury.

DOOR HEIGHT EXAMPLES[^]

For heights above 8' 9" (2667) refer to door height examples on page 41.

MEASUREMENTS:

18" = 457 mm
 21" = 533 mm
 24" = 610 mm



[^] Please note that the Martin Standard and the Cornerstone tongue and groove joint 8' (2438) is 4 sections vs 5 section for the 8' Safety Joint Cornerstone.

ATHENA

The modern design of glass allows natural light while providing you with security and privacy. Beauty and elegance are at your fingertips.





ALUMINUM ATHENA



211 / Clear Windows / Signal White

231 / Smoked Windows / Rusty Iron



STEEL ATHENA



232 / Smoked Windows / Bronze



211 / Frosted Windows / Stone Grey

ATHENA / FRENCHPORTE

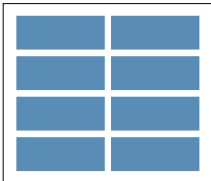


Legend: ∞ - Lifetime Warranty † 5 - 5 Year Warranty † 3 - 3 Year Warranty † 10 - 10 Year Warranty †

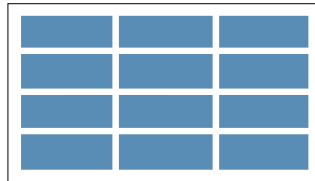
ATHENA PANEL STYLES

24 gauge steel or aluminum - ∞

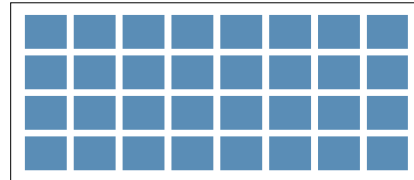
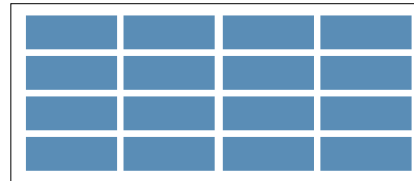
8' - 10'2" (2438 - 3099)



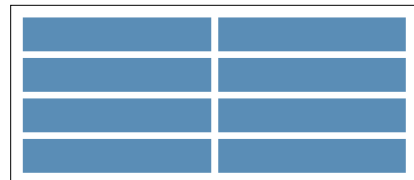
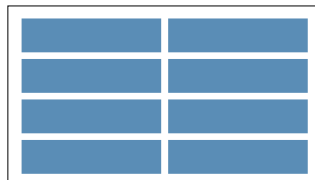
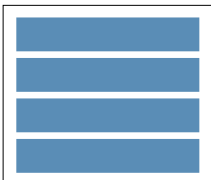
10'3" - 15'2" (3124 - 4623)



15'3" - 20'2" (4648 - 6147)

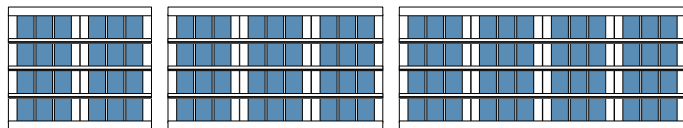
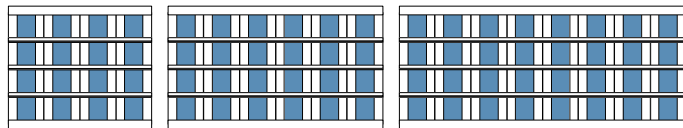


Available in aluminum only.

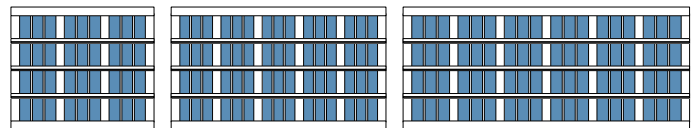
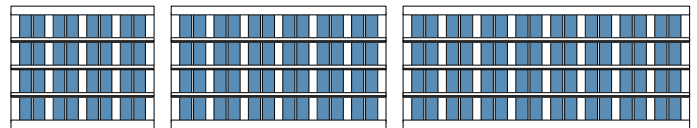


FRENCHPORTE PANEL STYLES

Available in aluminum only - ∞

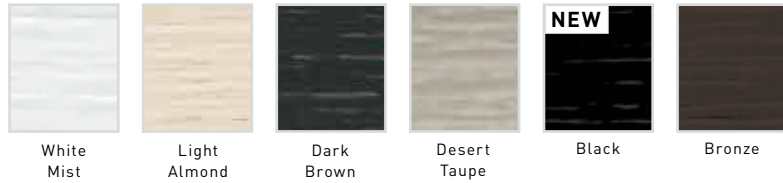


24 gauge steel or aluminum - ∞



COLORS

STEEL PAINT COLORS* - ⑩



STEEL WOOD GRAIN* - ⑩



POWDER COAT FINISHES* (STEEL- ⑤) OR ALUMINUM-③)

[See full list of colors on pages 42 - 43]



TEXTURE

Smooth or embossed textures are available on this door.
[Embossed comes standard. Smooth doors are powdercoated]



Smooth Steel



Embossed Steel



Smooth Aluminum

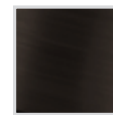
10' 2" (3099) Max Width

ANODIZED ALUMINUM FINISH

A natural looking, durable and corrosion-resistant finish. Other colors available upon request.



Clear



Bronze



Black

INSULATION

Add insulation for thermal efficiency, noise reduction, durability, and minimal upkeep.

[R-value represents rails only. Total door r-value will vary depending on glass type.]



Insulated Steel Frame Upgrade

HARDWARE

Includes roller, track and accessories for a strong and lasting door system.

[More information on page 46]



Martin Premium Hardware Package - ∞

WINDOW TINT

Insulated glass options are available on most window types.

[See p. 38 for full tint options] Glass and acrylic have different tints.

GLASS / ACRYLIC



Clear



Frosted



Bronze
(Tinted)



Gray
(Tinted)



Smoked
(Tinted)

LAMINATE



Clear



White

SECTION JOINT



Safety Joint

Martin safety joint helps protect fingers and hands from serious injury.

EXTRA OPTIONS

[More information on page 44]

- MAIL SLOTS
- VENTS
- T-HANDLE LOCK
- INSIDE LOCK
- VAULT RELEASE
- ANTIQUE HARDWARE

* Available in steel only.

ALUMINUM PINNACLE

Built like carriage house doors, but without the high maintenance associated with wood. Many stunning handmade designs to choose from.



115 / Clear Windows / Signal White

9 / Custom Arch / Dark Bronze / With Antique Hardware





63 / Clear Windows / Pure White / With Antique Hardware



66 / Smoked Windows / Rusty Iron / With Antique Hardware

STEEL PINNACLE

PATENTED DESIGN



163 / Smoked Windows / Iron Glimmer

168 / Smoked Windows / Pure White





173 V-Groove / Smoked Windows / Double Stile / True Bi-Directional Walnut Wood Grain Steel



183 V-Groove / Clear Windows / True Bi-Directional Ash Wood Grain Steel

PINNACLE



Legend: (∞) - Lifetime Warranty † (5) - 5 Year Warranty † (3) - 3 Year Warranty † (10) - 10 Year Warranty †

BASE MATERIAL

24 gauge steel or aluminum - (∞) (More panel styles on page 28 - 31)

GROOVE OPTIONS

V-A-X ANGLE OPTIONS

Angle and Groove options can be combined. (steel only)



V-Groove Short Panel



V-Groove Short Panel



H-Groove Short Panel



H-Groove Short Panel



H-Groove Long Panel



H-Groove Long Panel



V-pattern



V-pattern



A-pattern



A-pattern



X-pattern



X-pattern

FACE STILE OPTIONS

Additional options available upon request



Short Panel DD



Short Panel S DD S



Short Panel DD DD DD



Long Panel DD



Long Panel S DD S



Long Panel DD DD DD



Available with or without windows. Additional configurations available upon request. Above is an example of a v-groove, v-angle, double center stile door with windows, hinges and handles.

STEEL COLOR OPTIONS

Long-lasting baked-on paint.

STEEL PAINT COLORS* - 10

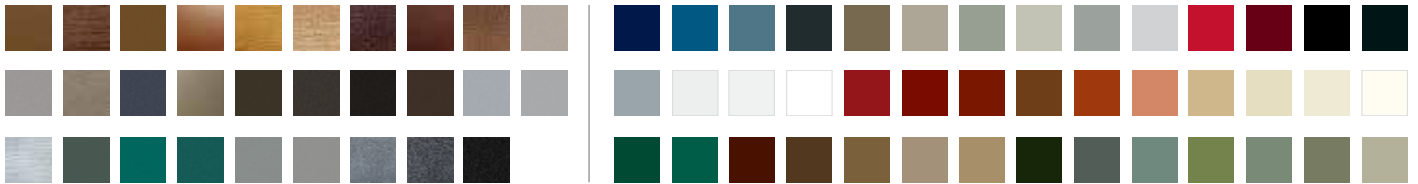


STEEL WOOD GRAIN* - 10



POWDER COAT FINISHES* (STEEL- 5) OR ALUMINUM- (3)

(See full list of colors on pages 42 - 43)



DUO-TONE FINISH OPTION

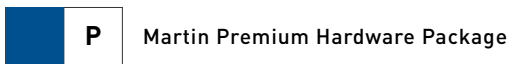
Duo-Tone finish allows you to combine two color choices on one Pinnacle door. Choose two complementing finishes to enhance the look of your home. (See available finishes and full list of colors on page 42 - 43)



Ash Wood Grain & Desert Bronze, Signal Brown & Mahogany Brown, Walnut & Natural Wood Grain Steel, Antique Silver & Window Gray

HARDWARE

Includes roller, track and accessories for a strong and lasting door system.



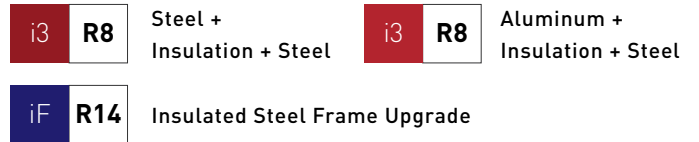
TEXTURE

Smooth or embossed textures are available on this door. (Embossed comes standard. Smooth doors are powdercoated)



INSULATION

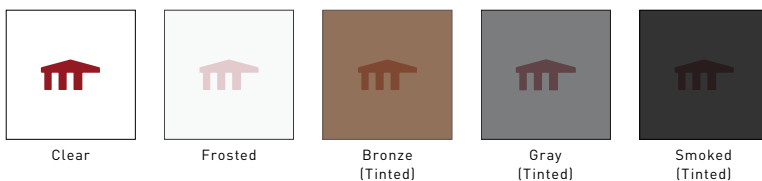
Add insulation with steel backing for thermal efficiency, noise reduction, durability, and minimal upkeep.



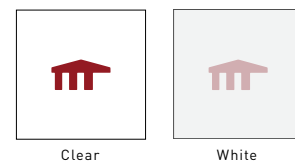
WINDOW TINT

Insulated glass options are available on most window types. (See p. 38 for full tint options) Glass and acrylic have different tints.

GLASS / ACRYLIC



LAMINATE



SECTION JOINT



Safety Joint
Martin safety joint helps protect fingers and hands from serious injury.

EXTRA OPTIONS

(More information on page 44)

- MAIL SLOTS
- T-HANDLE LOCK
- VAULT RELEASE
- VENTS
- INSIDE LOCK
- ANTIQUE HARDWARE

* Available in steel only.

† See manufacturer's written warranty for details and limitations.

PINNACLE PANEL STYLES

ALUMINUM ONLY

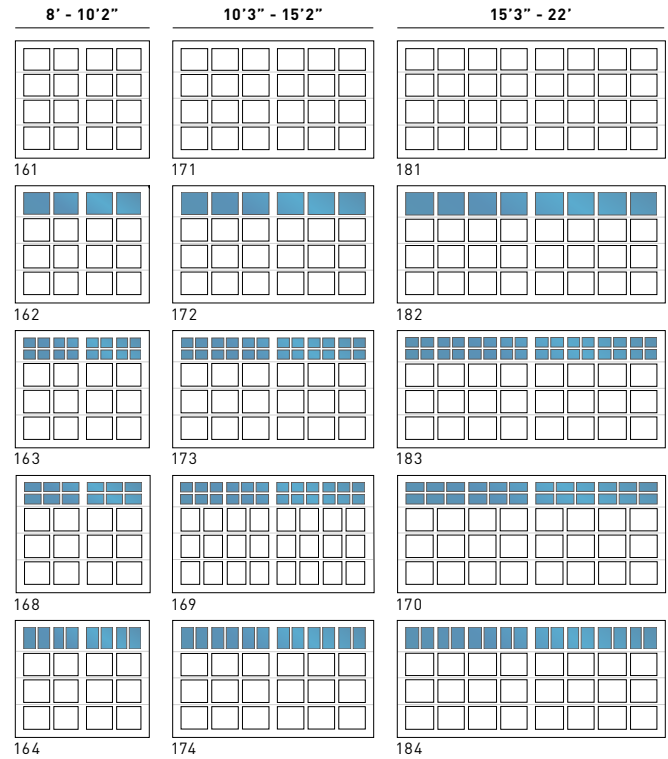
ALUMINUM ONLY

	8' - 10'2"	10'3" - 15'2"	15'3" - 22'	8' - 10'2"	10'3" - 15'2"	15'3" - 22'	
FULL HEIGHT							
	61	71	81	11	21	31	
	NO ARCH						
62		72	82	12	22	32	
63		73	83	13	23	33	
68		69	70	18	19	20	
64		74	84	14	24	34	
SINGLE ARCH							
		65	75	85	15	25	35
	66	76	86	16	26	36	
	67	77	87	17	27	37	
DOUBLE ARCH							
			88	28	38		
		80	90	29	40		
CHICAGO							
	8	9	10	5	6	7	

PINNACLE PANEL STYLES

ALUMINUM / STEEL / H-GROOVE / (V-A-X ANGLE STEEL ONLY)

ALUMINUM / STEEL / H-GROOVE / V-GROOVE

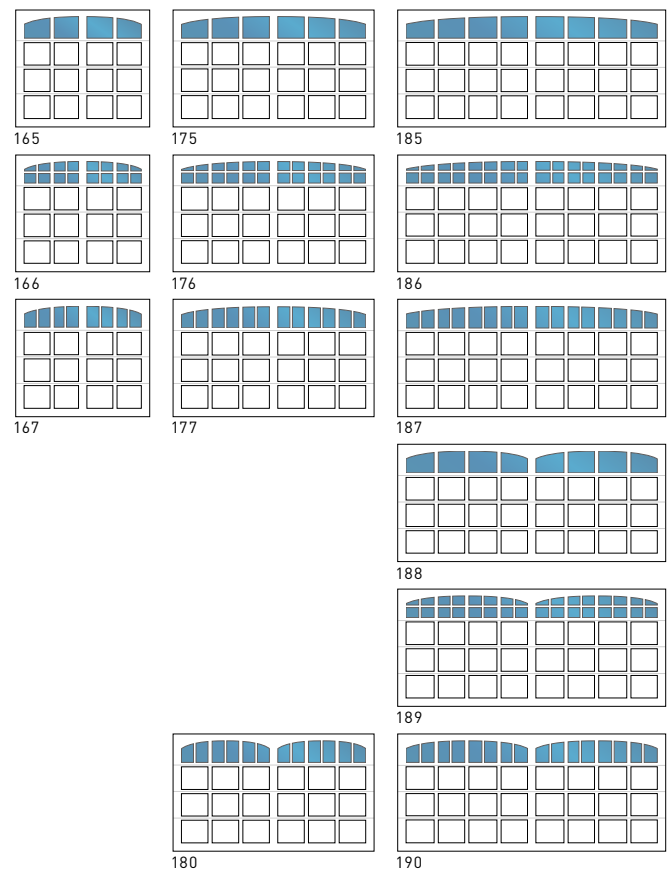
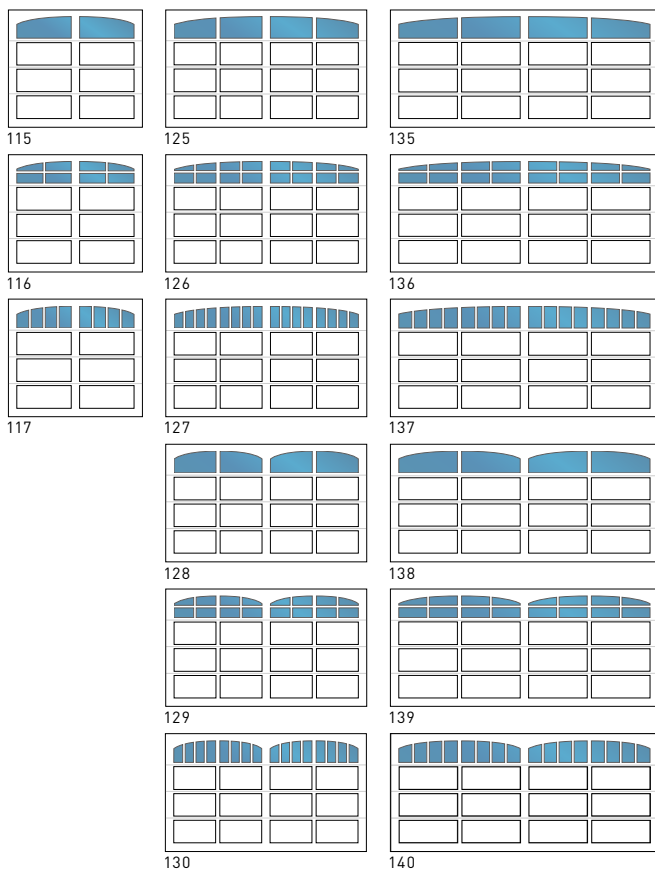


FULL HEIGHT

NO ARCH

ALUMINUM ONLY

ALUMINUM ONLY



SINGLE ARCH

DOUBLE ARCH

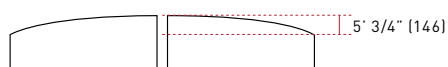
LONG PANEL

SHORT PANEL

MEASUREMENTS:

8'-10'2" widths = [2438-3099]
 10'3"-15'2" widths = [3124-4623]
 15'3"-22' widths = [4648 - 6706]

STANDARD RADIUS:



V-A-X ANGLE OPTIONS

Angle and Groove options can be combined.



111 / 63 Windows / H-Groove / A-Angle / Ash Wood Grain

STEEL LONG PANEL V-ANGLE

8' - 10'2"	10'3" - 15'2"	15'3" - 18'
111V	121V	131V
112V	122V	132V
113V	123V	133V
118V	119V	120V
114V	124V	134V

FULL HEIGHT
NO ARCH

STEEL LONG PANEL A-ANGLE

8' - 10'2"	10'3" - 15'2"	15'3" - 18'
111A	121A	131A
112A	122A	132A
113A	123A	133A
118A	119A	120A
114A	124A	134A

STEEL LONG PANEL X-ANGLE

8' - 10'2"	10'3" - 15'2"	15'3" - 18'
111X	121X	131X
112X	122X	132X
113X	123X	133X
118X	119X	120X
114X	124X	134X

FULL HEIGHT
NO ARCH

Angle and Groove options can be combined.

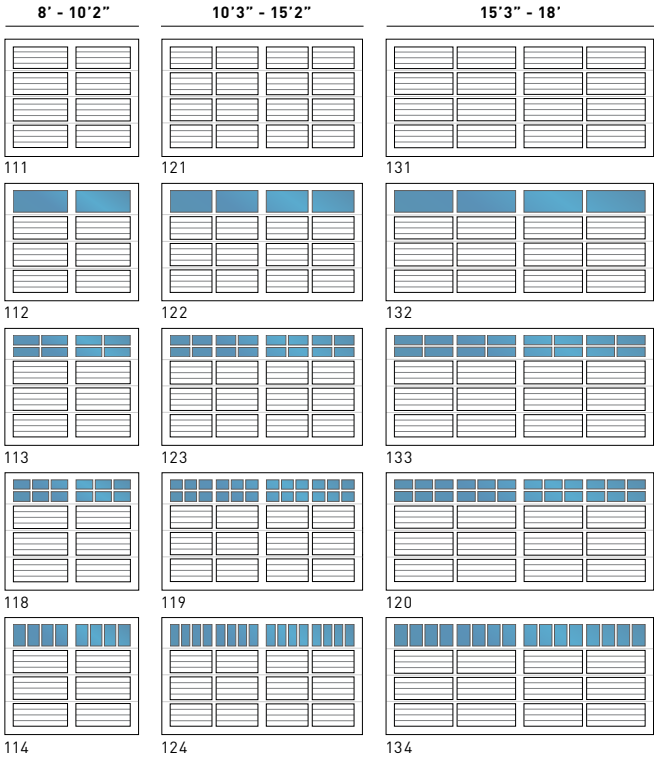
GROOVE OPTIONS

Angle and Groove options can be combined.



Close Up V-Groove Design / Walnut Wood Grain Steel

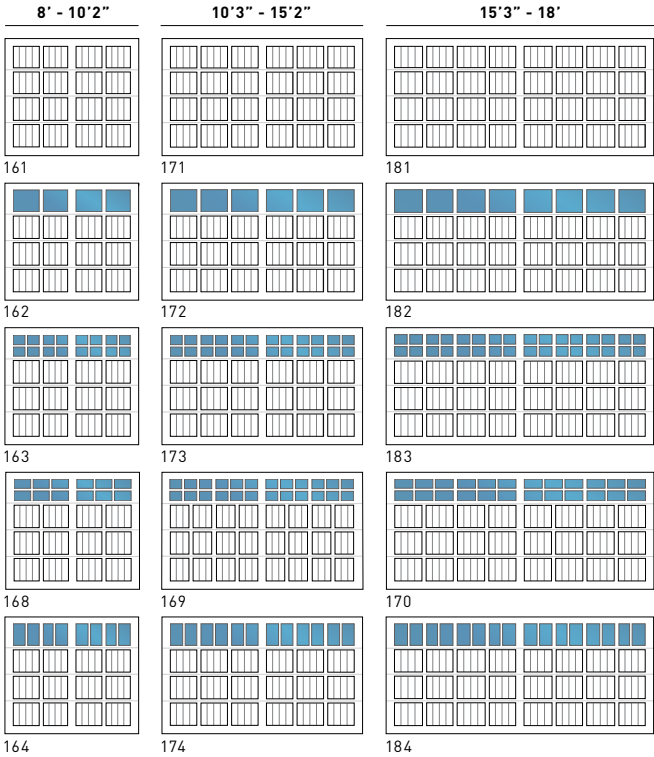
STEEL LONG PANEL H-GROOVE



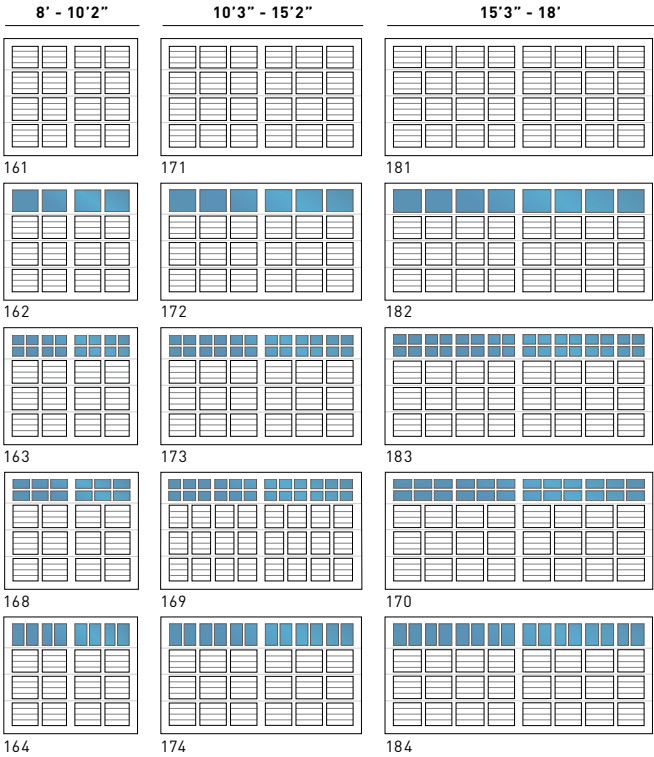
FULL HEIGHT

NO ARCH

STEEL SHORT PANEL V-GROOVE



STEEL SHORT PANEL H-GROOVE



FULL HEIGHT

NO ARCH

Angle and Groove options can be combined.

CHALET

The look and feel of our composite wood is so realistic with its natural texture and detailed wood grain you will think it's made from real wood. It's more durable and easier to maintain as well.

composite wood over composite wood



CHALET

composite wood over composite wood



9013D / Ash Stained Beachwood / With Antique Hardware

composite wood over steel



9003 / White Stained Barnwood over White Mist Steel

CHALET

PANEL STYLES

24 gauge steel. - 
[See page 35]

WOOD COLORS

Choose between two wood species and 6 long-lasting wood stains.

WOOD STAINS -



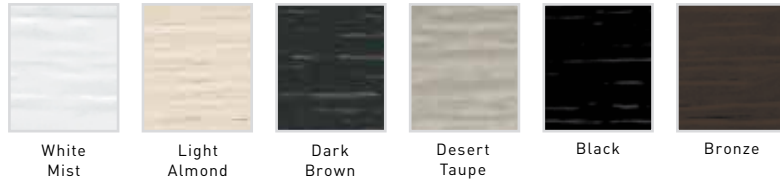
WOOD SPECIES -



STEEL COLOR OPTIONS

Long-lasting baked-on paint.
[See full list of colors on pages 42 - 43]

STEEL PAINT COLORS* -



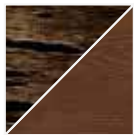
STEEL WOOD GRAIN* -



FINISH OPTIONS

Combine two color choices on one Chalet door. Choose two complementary finishes to enhance the look of your home.

[See available finishes and full list of colors on pages 42 - 43]



Composite Wood
[Medium Beachwood on
Natural Barnwood]



Composite Wood on Wood Grain Steel
[Dark Beachwood on
Ash Steel Wood Grain]



Composite Wood on Standard Steel
[Natural Barnwood on White Mist]

INSULATION

All doors are insulated with steel backing for thermal efficiency, noise reduction, durability, and minimal upkeep.

i4

R14

Steel + 2 Insulation Layers + Steel

i4

R18


Cladding + Steel + 2 Insulation Layers + Steel

HARDWARE

Includes roller, track and accessories for a strong and lasting door system.

[More information on page 46]

P

Martin Premium Hardware Package - 

SECTION JOINT



Safety Joint

Martin safety joint helps protect fingers and hands from serious injury.

EXTRA OPTIONS

[More information on page 44]



MAIL SLOTS



VENTS



VAULT RELEASE



INSIDE LOCK



ANTIQUÉ HARDWARE

CHALET PANEL STYLES

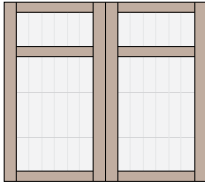
Custom designs available upon request.

8'-10'2" (2438 - 3099)

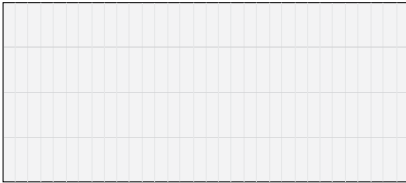
15'3" - 22' (4648 - 6706)



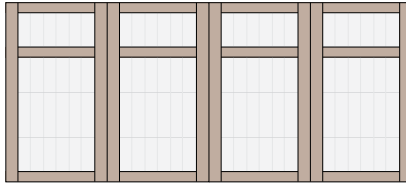
9000



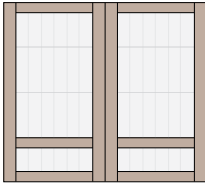
9001



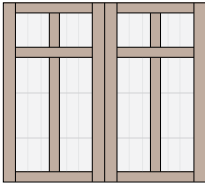
9000D



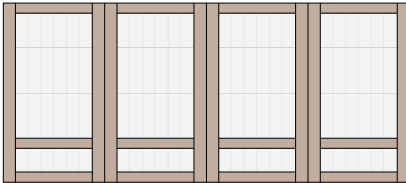
9001D



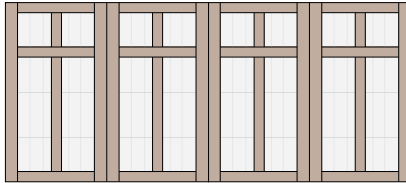
9002



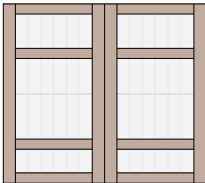
9003



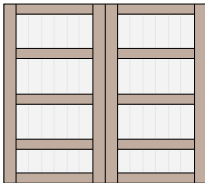
9002D



9003D



9004



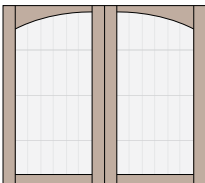
9005



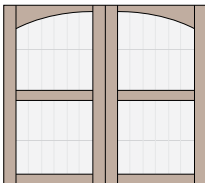
9004D



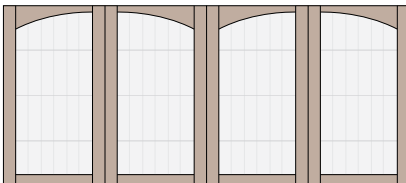
9005D



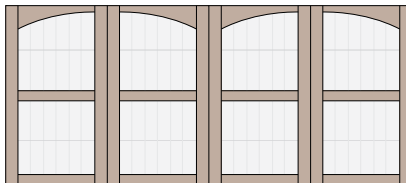
9006



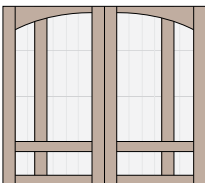
9007



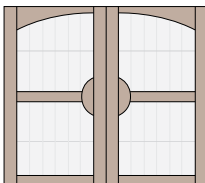
9006D



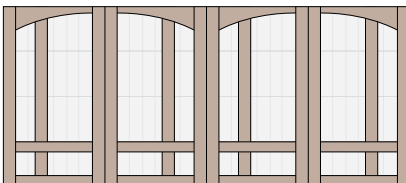
9007D



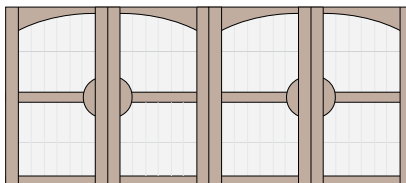
9008



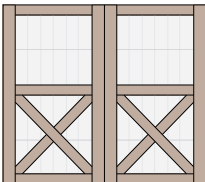
9009



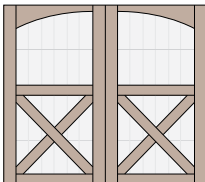
9008D



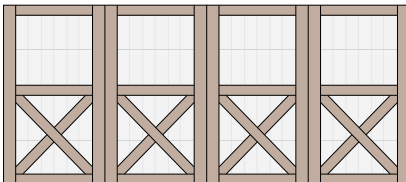
9009D



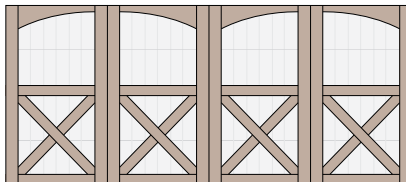
9010



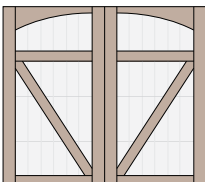
9011



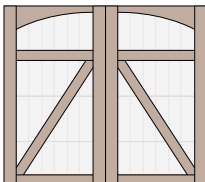
9010D



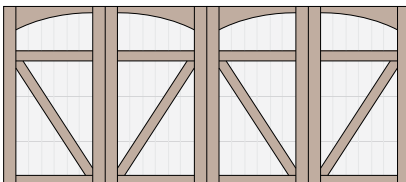
9011D



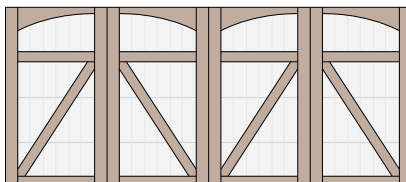
9012



9013



9012D



9013D

COPPER

Made from the purest copper, these unique doors offer a rare and distinctive look that will naturally patina, developing with time a breathtaking look.



Flush Panel (No Rib) / Copper / Commercially Aged

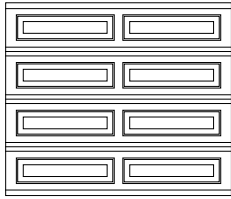


Long Panel / Copper

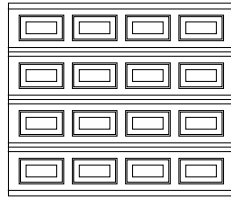
COPPER

PANEL STYLES

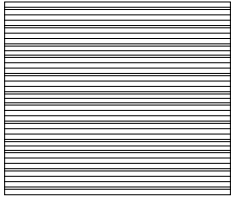
99.9% Copper Metal. - ∞



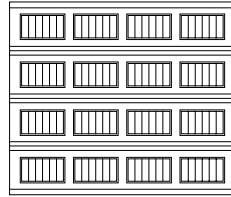
Long



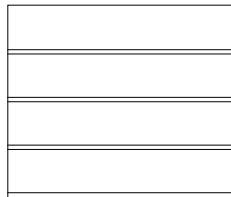
Short



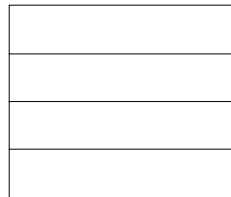
Ribbed



Grooved



Flush (With Rib)



Flush (No Rib)

HARDWARE



Powder Coated Hardware

All Copper model doors come with a white powder coated track and hardware.

COLOR



Installed with new copper and in time, the copper door will naturally patina. Patina rates will vary depending on environment.

99.9% Copper Metal

WINDOWS

Available in acrylic or tempered glass and in Classic or Steel-Framed windows.

[See pages 38 - 39]

WINDOW TINT

Insulated glass options are available on most window types.

[See p. 38 for full tint options] Glass and acrylic have different tints.

GLASS / ACRYLIC



Clear



Frosted



Bronze
(Tinted)



Gray
(Tinted)



Smoked
(Tinted)

LAMINATE



Clear



White

INSULATION*

All doors are insulated with steel backing for thermal efficiency, noise reduction, durability, and minimal upkeep.

i4 R14 Copper + 2 Insulation Layers + Steel

i3 R8 Copper + Insulation + Steel

HARDWARE

Includes roller, track and accessories for a strong and lasting door system.

[More information on page 46]



P Martin Premium Hardware Package - ∞

SECTION JOINT



Safety Joint

Martin safety joint helps protect fingers and hands from serious injury.

EXTRA OPTIONS

[More information on page 44]

- MAIL SLOTS
- VAULT RELEASE
- T-HANDLE LOCK
- VENTS
- INSIDE LOCK
- ANTIQUE HARDWARE

† See manufacturer's written warranty for details and limitations.

* i3 Insulation comes standard

PATENTED DESIGN

STEEL-FRAMED WINDOWS

Martin's innovative window design provides proper wood grain direction and exact color match with other door sections.

8' - 10' 2" (2438 - 3099)	10' 3" - 15' 2" (3124 - 4623)	15' 3" - 18' 2" (4648 - 5537)
12	22	32
13	23	33
14	24	34
62	72	82
63	73	83
64	74	84
68	69	70

WINDOW OPTIONS

WINDOW HEIGHT
15" - 30" (381 - 762)

15" (381)

30" (762)

CENTER STYLE WIDTH
3" - 7" (76 - 177)

Which one would you choose?



WINDOW TINT & LAMINATE OPTIONS

(Simulated color. In some cases glass tint is lighter than acrylic tint.)

Glass / Acrylic

Smoked

Clear

Frosted

Gray

Bronze

Laminated

Blues

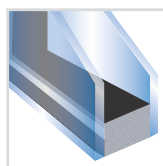
Greens

Grays

Bronzes

Comes clear or opaque.

INSULATED WINDOW OPTIONS



INSULATED GLASS

Upgrade your Steel-Framed windows with insulated glass.

CLASSIC WINDOWS[◇]

Old School but not forgotten, Martin Classic Windows come in a variety of beautiful choices.



Virginian Short



Virginian Long



Oxford



Nottingham



Victoria



Lancaster



Roxbury



Canterbury



Sherwood Long



Sunset*



Hampshire



Brentwood*



Banbury*



Newbury



Full View Short



Full View Long



Dawn* (16' - 20' Widths) (4876 - 6096)



Dawn-3 (15' Width) (4572)



Monterrey*



Madison*

DOUBLE PANE



Upgrade your Classic Windows with an acrylic double pane option.

Double Pane Window adds additional sound reduction and is ideal for hot or cold climates.

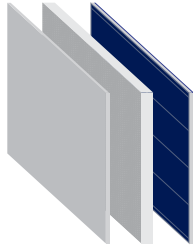
* Not available in 12'-15' (3658-4572) widths.

◇ Not all panel styles allow for windows. Choose Steel-framed windows for exact color match.

INSULATION

Insulation increases thermal efficiency, helps decrease noise levels and improves the appearance of the door interior. Choose steel backed insulation for durability and minimal upkeep.

ATHENA & PINNACLE

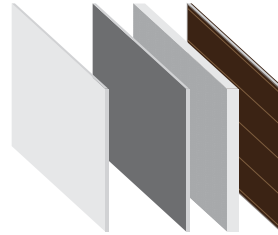


Pinnacle Panels
Polystyrene insulation with heavy-gauge color-matched steel backing.

iF **R14** ◊

Athena & Pinnacle Rails
Polyurethane insulated rails.

CHALET



i4 **R14** i4 **R18**

(Cladding) + Steel + 2 Insulation Layers + Steel

1-layer of polystyrene and 1-layer of thermal insulation.

CORNERSTONE & STANDARD



N1

Steel

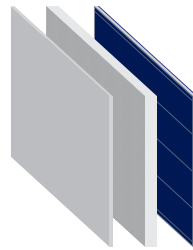
2" (51) Thick door construction.



i2 **R8**

Steel + Insulation + Vinyl

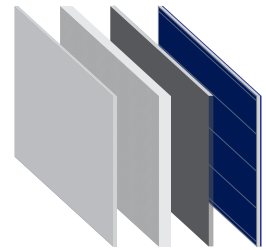
Polystyrene insulation with vinyl paneled backing.



i3 **R8**

Steel + Insulation + Steel

Polystyrene insulation with heavy-gauge steel paneled backing.



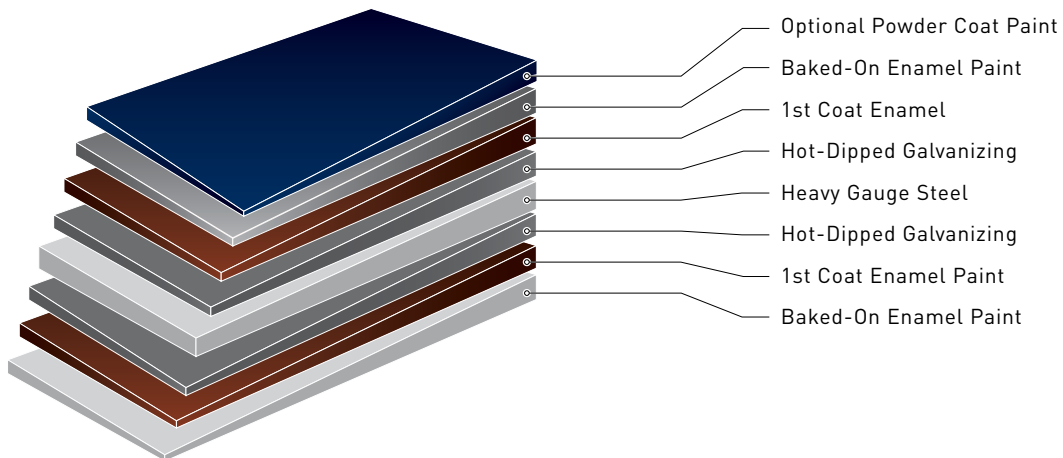
i4 **R14**

Steel + 2 Insulation Layers + Steel

1-layer of polystyrene and 1-layer of thermal insulation.

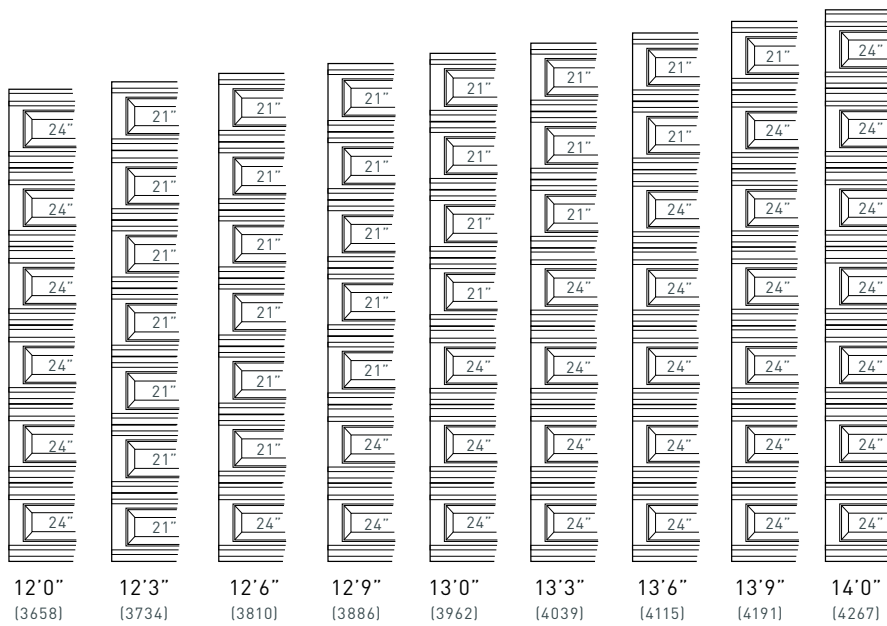
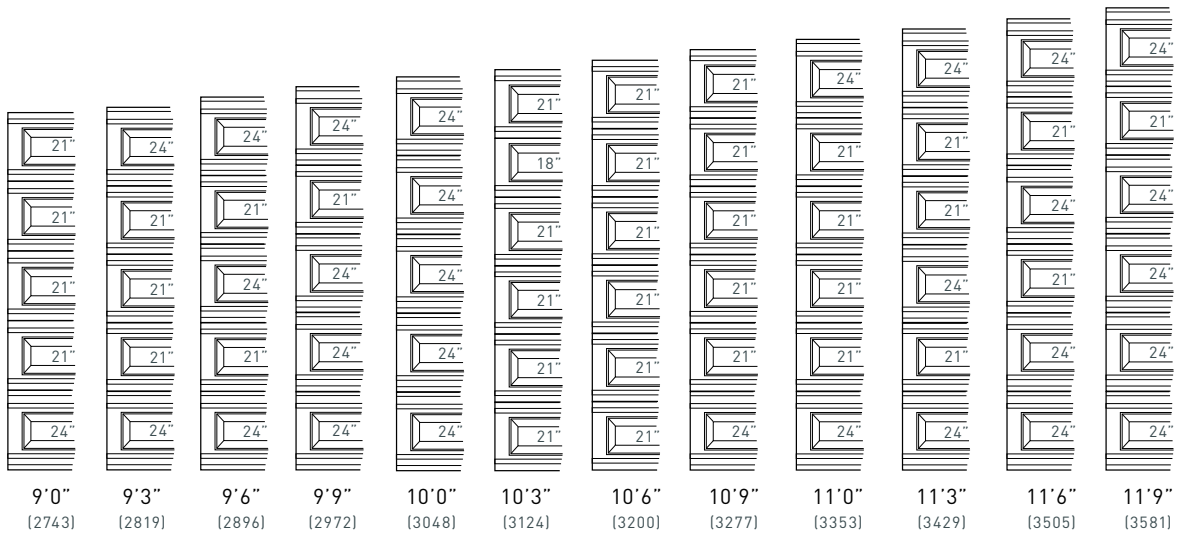
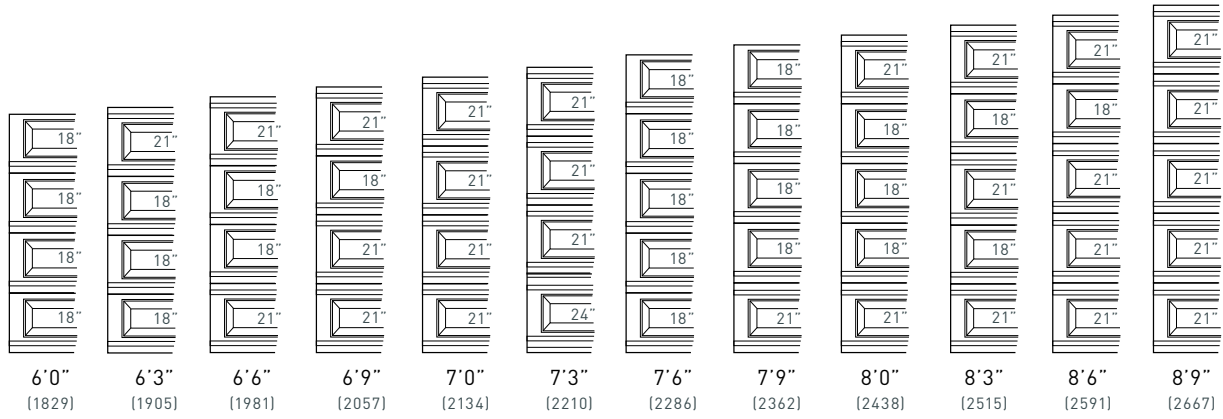
PROTECTIVE SYSTEM

Martin Multi-layered baked-on enamel paint ensures superior corrosion resistance and a durable finish.



DOOR HEIGHT EXAMPLES

For Cornerstone and Copper doors up to 20' (6096).



Height	21"	24"	Total
14'0" (4267)	0	7	7
14'3" (4343)	7	1	8
14'6" (4420)	6	2	8
14'9" (4496)	5	3	8
15'0" (4572)	4	4	8
15'3" (4648)	3	5	8
15'6" (4724)	2	6	8
15'9" (4801)	1	7	8
16'0" (4877)	0	8	8
16'3" (4953)	7	2	9
16'6" (5029)	6	3	9
16'9" (5105)	5	4	9
17'0" (5182)	4	5	9
17'3" (5258)	3	6	9
17'6" (5334)	2	7	9
17'9" (5410)	1	8	9
18'0" (5486)	0	9	9
18'3" (5563)	7	3	10
18'6" (5639)	6	4	10
18'9" (5715)	5	5	10
19'0" (5791)	4	6	10
19'3" (5867)	3	7	10
19'6" (5944)	2	8	10
19'9" (6020)	1	9	10
20'0" (6096)	0	10	10

MEASUREMENTS:

18" = 457 mm
 21" = 533 mm
 24" = 610 mm

SELECT POWDER COAT FINISHES

Martin's powder coat finishes are long-lasting and durable.

SOLID



Sapphire Blue
RAL 5003



Azure Blue
RAL 5009



Pigeon Blue
RAL 5014



Dark Brown
CS 0003



Beige Gray
RAL 7006



Desert Taupe
CS 0005



Stone Gray
RAL 7030



Silk Gray
RAL 7044



Platinum Gray
RAL 7036



Telegray 4
RAL 7047



Signal Red
RAL 3001



Wine Red
RAL 3005



Jet Black
RAL 9005



Black Gray
RAL 7021



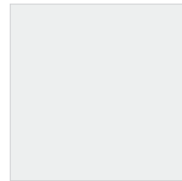
Slate Gray
RAL 7015



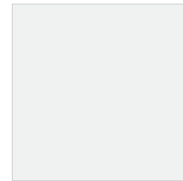
Basalt Gray
RAL 7012



Window Gray
RAL 7040



White Mist
CS 0001



Traffic White
RAL 9016



Signal White
RAL 9003



Brown Red
RAL 3011



Oxide Red
RAL 3009



Red Brown
RAL 8012



Signal Brown
RAL 8002



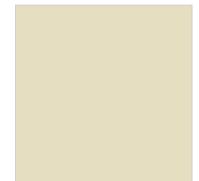
Copper Brown
RAL 8004



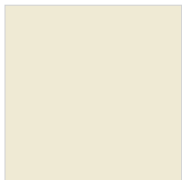
Beige Red
RAL 3012



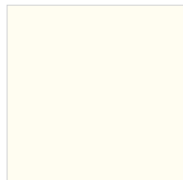
Beige
RAL 1001



Light Ivory
RAL 1015



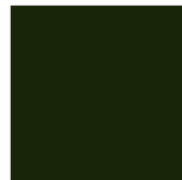
Oyster White
RAL 1013



Pure White
RAL 9010



Fir Green
RAL 6009



Brown Green
RAL 6008



Black Green
RAL 6012



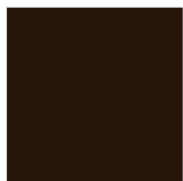
Moss Green
RAL 6005



Pine Green
RAL 6028



Dark Bronze
CS 2604



Dark Chocolate
CS 3070



Mahogany Brown
RAL 8016



Terra Brown
RAL 8028



Pale Brown
RAL 8025



Adobe Stone
CS 0004



Gray Yellow
RAL 1019



Tarpaulin Gray
RAL 7010



Mouse Gray
RAL 7005



Reed Green
RAL 6013



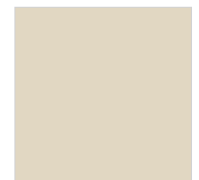
Cement Gray
RAL 7033



Moss Gray
RAL 7003



Pebble Gray
RAL 7032



Light Almond
CS 0002

SELECT POWDER COAT FINISHES

Martin's textured metallic powder coat finishes are long-lasting and durable.

METALLIC



Walnut Vein
CS 3040



Mahogany Vein
CS 3050



Rusty Iron
CS 2005



New Copper
CS 2015



Olive Bronze
CS 3025



Redwood
CS 3065



Cherry Wood
CS 3060



Corten
CS 4025



Copper Vein
CS 2010



Copper Gold
CS 3030



Mesquite
CS 3055



Bronze
CS 4030



Oak Stone
CS 1055



Tanzanite Metallic
CS 4020



Golden Oak
CS 3035



Red Pine
CS 3045



Sandcast Bronze
CS 3020



Bronze Metallic
CS 3015



Sage Metallic
CS 4005



Patina Green
CS 4010



Emerald Metallic
CS 4015



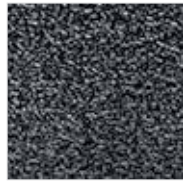
Starlite Granite
CS 1005



Desert Bronze
CS 3010



Weathered Iron
CS 1975



Silver Shadow
CS 1985



Antique Silver
CS 1980



Metallic Aluminum
CS 1035



Bright Stainless
CS 1030



Iron Glimmer
CS 1045



Ironstone Metallic
CS 1050



Metallic Pewter
CS 1040



Champagne Metallic
CS 3005

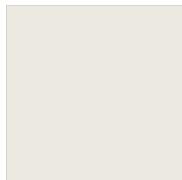
Available in high / low gloss.

Color samples will vary due to printer's color adjustments. For color accuracy see actual color chips.

All steel and copper doors have an embossed texture, unless ordered smooth.

Aluminum doors are smooth.

Insulation is required on powder coated doors.



Gray White
RAL 9002

ADDITIONAL OPTIONS

DOOR ACCESSORIES

Customized features make a Martin Garage Door a unique and individualized door. Martin's many unique options and security features bring style and functionality to any door.



Mail Slots
Available in brass or brushed aluminum.
*Cannot be painted.



Vents
Color matched with the rest of the door.



Outside T-Handle Lock
Chrome, brass or black.



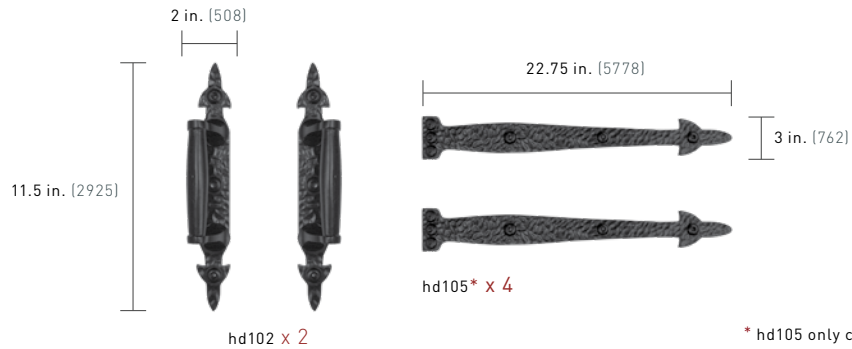
Inside Side Latch Lock
[Padlock Not Included]



Vault Release
Allows you to open and close the door during power outage.

HARDWARE KIT

Beautiful matching hinges and handles add a touch charm to your garage door. Can be powder coated.



* hd105 only comes in a hardware kit.



Pinnacle 183 / True Bi-Directional Walnut Wood Grain Steel

COMPARISON CHART

	Premium Steel	Martin	Elite		Athena	Pinnacle
	Cornerstone	Standard	Chalet	Copper		
Material						
High Tensile Steel	■	■	■		■	■
Steel + Wood Composite Overlay			■			
Extruded Aluminum					■	■
Copper				■		
Panels						
Short, Long, Grooved	■	■		■		
Ribbed	■			■		
Flush	■			■		
Special			■		■	■
Number of Sections to 7'						
4-Section	■	■		■		
5-Section						
Varies			■		■	■
Stiles						
Standard	■	■		■		
Wide	■			■		
Varies			■		■	■
Steel Windows						
Acrylic or Tempered Glass	■	■		■	■	■
Insulated Glass	■	■		■	■	■
Laminated Glass	■	■		■	■	■
Classic Windows						
Acrylic or Tempered Glass	■	■		■		
Double Pane	■	■		■		
Gauge						
Steel - 26		■				
Steel - 24	■		■		■	■
Copper - 23				■		
Aluminum - 14					■	■
Color Options						
White Mist, Lt. Almond, Dk. Brown, Dsr. Taupe	■	■	■		■	■
Black, Bronze	■		■		■	■
Powder Coat	■	■			■	■
Walnut, Ash, Natural Wood Grain Steel	■		■		■	■
Dark, Medium, White, Primed Wood Stains			■			
Insulation Value						
R8	■	■		■		
R14	■	■	■	■		
R18			■			
Varies					■	■
Warranty[†]						
Lifetime Section & Parts	■		■	■	■	■
5 Year Warranty Section & Parts*		■				
5 Year Delamination Warranty			■			
Hardware, Hinges, Track & Roller						
Martin Standard Hardware Package	■	■				
Martin Premium Hardware Package	■	■	■	■	■	■
Galvanized Springs	■	■	■	■	■	■
Safety Joint	■		■	■	■	■
Tongue & Groove Joint	■	■				

[†] See manufacturer's written warranty for details and limitations. Limited warranty in some environments, climates, coastlines and all of Hawaii and Middle East region. Powder coat warranty on steel is 5 years. Powder coat warranty on aluminum is 3 years. Steel-Framed Windows warranty is 10 years except Copper & Martin Standard which are 5 years. Classic Windows warranty is 3 years. 10 year paint warranty excluding Martin Standard, which is 5 years.

* Martin Standard can be upgraded to premium hardware, which comes with a lifetime warranty.

HARDWARE

Martin's hardware is long lasting, corrosion resistant, and has better safety features than industry standard.

Spring

Center-mount springs have a high risk of explosive discharge due to spring torque. Martin's side-mounted Safety Spring system helps prevent accidents from happening. Side or center-mount springs are available on all doors.

Track & Roller

Martin hardware comes with hemmed edges and reduced hole size to help prevent injury. Martin rollers have 11 sealed ball bearings, and are pre-lubricated for smooth use. Roller shields are used for additional finger safety.

Hinge

Martin's low-profile safety hinge premium reduces the gap between sections.

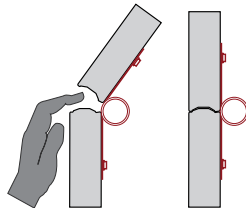
Lift Cable

Martin's thicker 1/8" (3mm) cable protects from breakage, making your door safer.

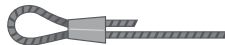
INDUSTRY STANDARD



- ⊖ Oil-tempered spring
- ⊖ 5,000 - 10,000 life cycle



- ⊖ 16 Gauge



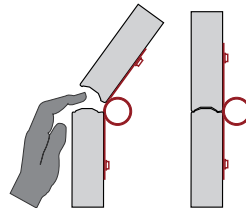
- ⊖ 3/32" (2.4mm) thick
- ⊖ No loop protection

! WARNING
INJURY OR DEATH

MARTIN STANDARD



- ⊖ Galvanized Springs
- ⊖ 15,000 life cycle



- ⊖ 12 + 14 Gauge



- ⊖ 1/8" (3mm) thick
- ⊖ 2000 lbs. lift capacity
- ⊖ Extra loop protection

5 Year Warranty

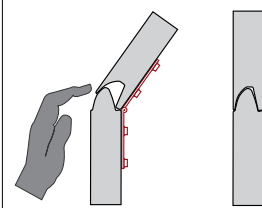
MARTIN PREMIUM



- ⊖ Galvanized Springs
- ⊖ 30,000 life cycle



- ⊖ 16 Gauge Steel
- ⊖ Reverse Angle



- ⊖ 10 + 14 Gauge



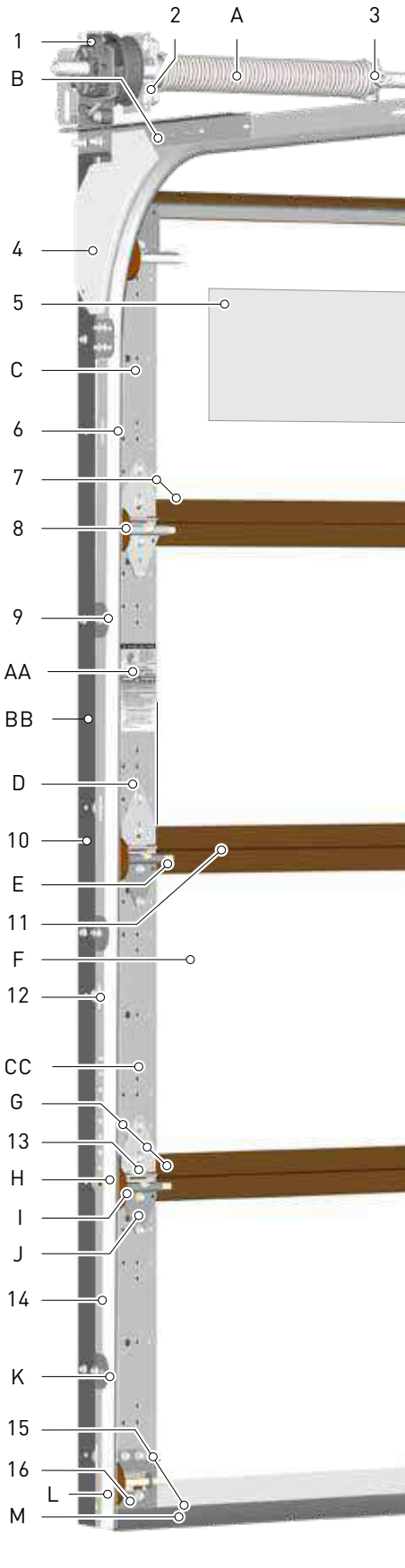
- ⊖ 1/8" (3mm) thick
- ⊖ 2000 lbs. lift capacity
- ⊖ Extra loop protection

Lifetime Warranty*

* See manufacturer's written warranty for details and limitations.

† Some doors require only one spring due to weight.

MARTIN ADVANTAGE



How do other garage doors compare to Martin?

These upgrades are included on most Martin garage doors, and are usually an up-charge or not included at all on companies doors.

Safety		Martin	Others
Items that help protect you from injury			
1.	Controlled Descent Device [†]	✓	—
2.	Side Spring Anchor Bracket	✓	—
3.	Safety Set Screws	✓	—
4.	Curve Shields [†]	✓	—
5.	Acrylic Panes for Windows	✓	✓
6.	Rolled Edges on Tracks	✓	—
7.	Rolled Edges, Stiles / Sections	✓	—
8.	Roller Shields ^{TM†}	✓	—
9.	Round Corners on Brackets	✓	—
10.	Rolled Edge Rev. Angle Shields [†]	✓	—
11.	Safer Joint [†]	✓	—
12.	Reduced Hole Sizes in Tracks	✓	—
13.	Low Profile Safety Hinges	✓	—
14.	Concealed Lift Cables	✓	—
15.	De-burred Steel Parts	✓	—
16.	Lock-on Bottom Roller Brackets	✓	—
Long Life			
A.	Two Galvanized Torsion Springs [†]	✓	—
B.	Hot-Dip Galvanized Steel	✓	—
C.	Extruded Holes For Fastening Screws	✓	—
D.	Hardened Fasteners	✓	—
E.	Longer Stem Rollers [†]	✓	—
F.	Minimum Four Sections High	✓	✓
G.	3-Layer Hinge, Stile, Section Fastening	✓	—
H.	Higher Wind Load Ratings [†]	✓	—
I.	Sealed Bearing Nylon Rollers [†]	✓	—
J.	Commercial Grade Roller Brackets [†]	✓	—
K.	Self-Adjusting Lift Cables	✓	—
L.	Hardware Tested to 100,000 Cycles [†]	✓	—
M.	Full Length Bottom Reinforcing Angle	✓	—
Convenience			
AA.	Home Owners Information	✓	—
BB.	Dry Wall Mount Certified [†]	✓	—
CC.	2" Wider Door Provides Weather-seal	✓	—

* Not applicable on Martin Standard

† Optional upgrade on some models

PATENTED DESIGN
Martin's steel garage door looks like
wood, without the upkeep or cost.

Martin Door Dealer Info



NOW WITH ANGLES



Pinacle / 111 / A-Angle / 63 Windows / H-Groove / True Bi-Directional Ash Wood Grain Steel

AD-B16-08



2828 S 900 W, SLC, UT 84119 · 1(800)388.9310
WWW.MARTINDOOR.COM
MADE IN USA SINCE 1936